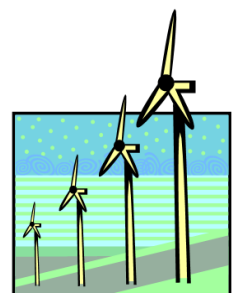
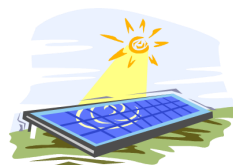


ESPEX Revive

For Greener Renewable Energy Storage

TPS Series



Fully Charged cell with Electrolyte S.G. = 1.240

Cell Type	AH Capacity to 1.80V at 20°C					Overall Cell Dimensions			Typical	Acid	Cells
	at the rate of					Length	Width	Height	Weight	Volume	per
	120Hr	100Hr	70Hr	50Hr	10Hr	mm	mm	mm	Kg	Litres	Module
2TPS 370	376	370	358	346	250	65	198	745	19	4.8	6
3TPS 560	569	560	542	524	375	83	198	745	27	6.5	6
4TPS 750	762	750	726	702	500	101	198	745	35	8.1	6
5TPS 935	950	935	906	875	625	119	198	745	43	9.3	6
6TPS 1120	1138	1120	1085	1048	750	137	198	745	51	11.0	3
7TPS 1300	1321	1300	1259	1216	870	173	198	745	58	13.7	3
8TPS1500	1524	1500	1453	1403	1000	191	198	745	67	15.5	3

Cell Construction

- ◆ Tubular Positive Plates with low Antimony alloy spines - high pressure die cast at > 100 bar
- ◆ Pasted Grid Negative Plates cast from Low maintenance alloy - matching the positive plate
- ◆ Microporous Separator for optimal discharge performance and long service life
- ◆ Unique post sealing arrangement to minimise corrosion and prevent short-circuits
- ◆ Integrated brass insert terminal post for bolt-on connection
- ◆ PP cell boxes to withstand tough handling, transportation and installation conditions
- ◆ Choice of Flip-top, Ceramic dome or Auto-filling Vent Plugs
- ◆ Cells suitable for fitting Auto-filling (water top-up) system and Air agitation system
- ◆ Cable inter-cell connectors and insulated screws

Suitable for application in

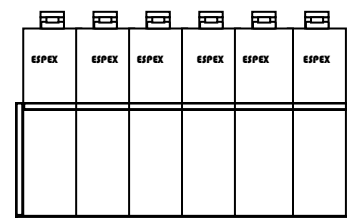
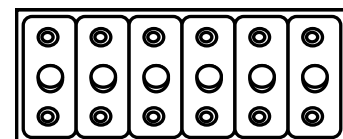
Solar, Wind and other Renewable energy storage

IT and Telecommunications

Emergency and regular lighting

Design Life Expectancy

Up to 15 years or 1400 cycles at 80% Depth of Discharge



Steel Module

Installation

Install in vertical position, fitted in light-weight steel modules holding 3 or 6 cells

Modules may be connected in series to attain desired battery voltage



Unit 13 Llandough Trading Estate
Cardiff. CF11 8RR, UK
Tel: +44 (0) 2920 705453
Fax: +44 (0) 2920 708165
Email: amit@espexbatteries.co.uk

European subsidiary company of EXIDE INDUSTRIES LTD, Calcutta India.

Continuous development may lead to specifications change without prior notice .